

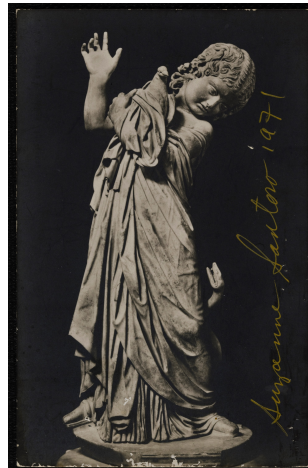
SUZANNE SANTORO

*1946, Brooklyn, US. Lives in Capranica, IT.

Santoro's artistic practice has been a rich journey into the realm of female representation and its hidden structures. Informed by her decades of study, she reflects on the partial erasure of women throughout Western art history, unveiling the visible in the invisible. Suzanne Santoro graduated from the School of Visual Arts, New York. In the late 1960s she moved to Italy where she joined the feminist group *Rivolta Femminile*, alongside Carla Lonzi (1931-1982) and Carla Accardi (1924-2014). In 1976, together with Carla Accardi, Nedda Guidi, and Stephanie Oursler, she founded the Cooperativa Beato Angelico, the first women-only exhibitions art space in Rome. There they exhibited their own works alongside overlooked historical women artists such as Artemisia Gentileschi, Elisabetta Sirani, and Regina Bracchi. In the early 1970s, Santoro started her most significant body of work, the *Black Mirrors*, as well as a series of resin sculptures directly referring to female anatomy, cast on her own body. From the late 1980's until 2023 she worked and lived recluse from the artworld, while never stopped working on her visual research. In 2024 Lovay Fine Arts started a series of exhibitions in art fairs and galleries, in Paris, Geneva, Milano and Basel.



Untitled (*Statua Romana Dyptic*), 1971
Original vintage postcard
13.5 × 17 cm
each postcard 13.5 × 8.5 cm



Untitled (*Statua Romana*), 1971
Original vintage postcard
13.5 × 8.5 cm



Statua Romana, Black Mirrors, 1972
Photo on wood, polished polyester resin
18 × 13 × 2 cm



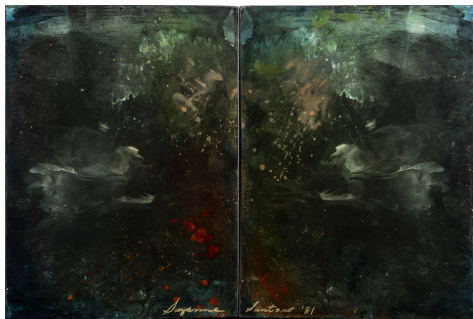
Hermaphrodite, Black Mirrors, 1974
Photo on wood, polished polyester resin
40 × 60 × 2 cm
(40 × 30 cm each pannel)



The Family, 1976
Photo on wood, polished polyester resin
100 × 172 × 4 cm



Res Color, 1980
Photo on wood, polished polyester resin
40 × 60 × 2 cm
40 × 30 cm each panel



Res Color Chimera, 1981
Photo on wood polished polyester resin
40 × 60 × 2 cm
40 x 30 cm each panel



Mount of Venus, 1971
Cast Resin
14 × 14 × 5 cm



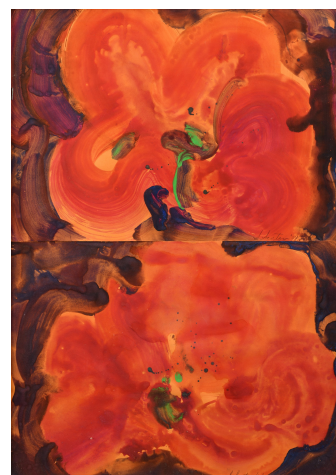
Untitled, 1971
Cast resin
15 × 30 × 13 cm



La Clitoride, 1974
Photo on wood, polished polyester resin
24 × 18 cm



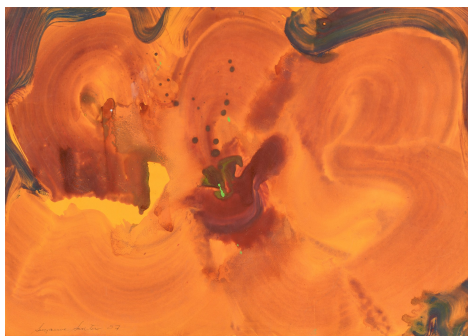
Vasi Etruschi, Black Mirrors, 1976
Photo on wood, polished polyester resin
18 × 39 × 2 cm
18 x 13 cm each



Blood Roses, 2004
Tempera on paper
69 × 48.5 cm



Blood Roses, 2006
Tempera on paper
47 × 32.5 cm



Blood Roses, 2004
Tempera on paper
48.5 × 68.9 cm



Blood Roses, 2004
Tempera on paper
48.5 × 68.5 cm



Blood Roses, 2004
Tempera on paper
35 × 50 cm



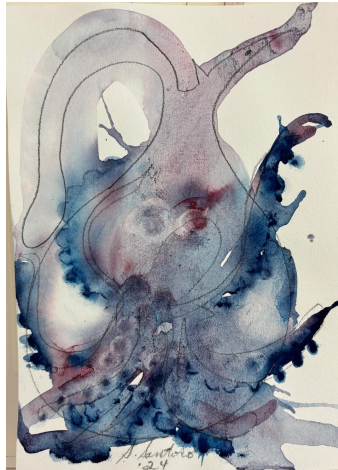
Blood Roses, 2004
Tempera on paper
35 × 50 cm



Femaleness, 2007
Watercolor on paper
24.8 × 17.4 cm



The Chalice (CLO02), 2022
Pencil and watercolor on paper
21 × 14 cm



The Chalice (CLO08), 2024
Pencil and watercolor on paper
21 × 14 cm